

PART OF THE N.W. 1/4, SEC. 34, T.6N., R.1W., S.L.B. & M.

HIGHLAND ADDITION
AMENDED

FOR COMPLETE ENG DATA SEE
ORIGINAL DEDICATION PLAT IN
BOOK 5, PAGE 1 OF RECORDS.

TAXING UNIT: 25

SEE BK. 2, PAGE 18

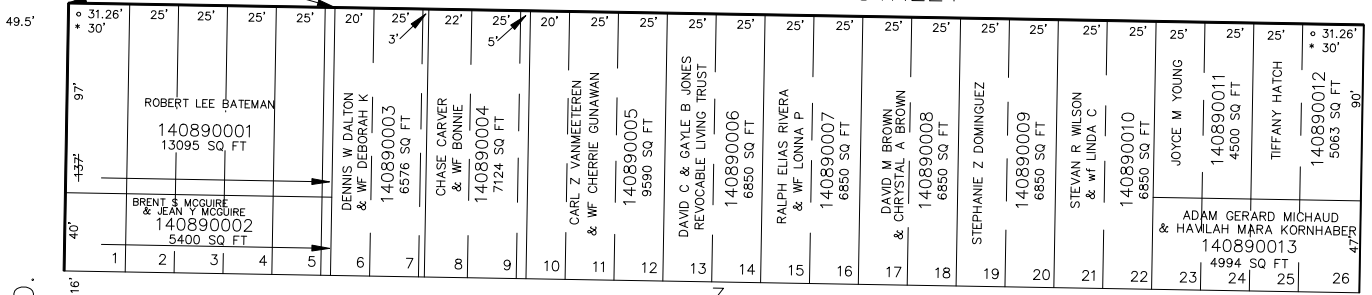
BLOCKS 3 & 4

IN OGDEN CITY

SCALE 1" = 50'

27TH

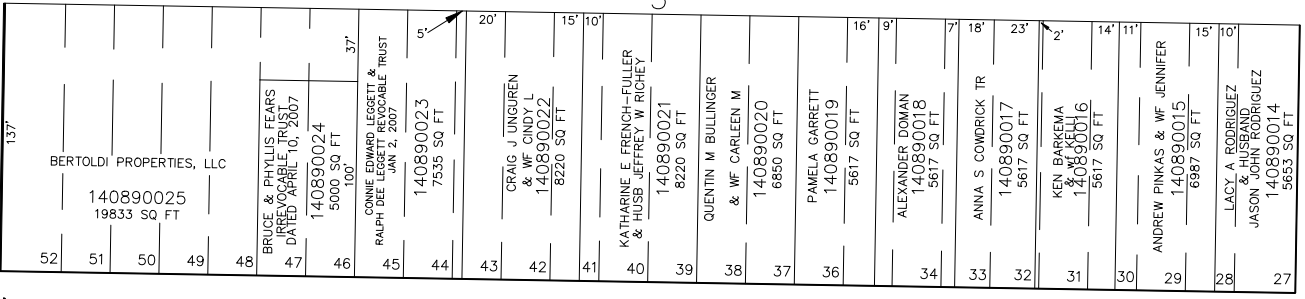
STREET



BLVD.

AVENUE

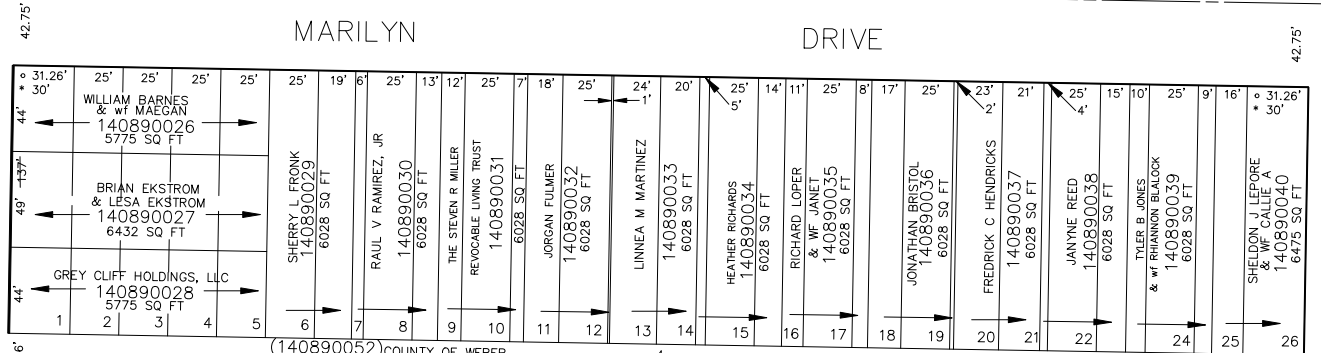
SEE BK. 2, PAGE 15



S 89'02" E

MARILYN

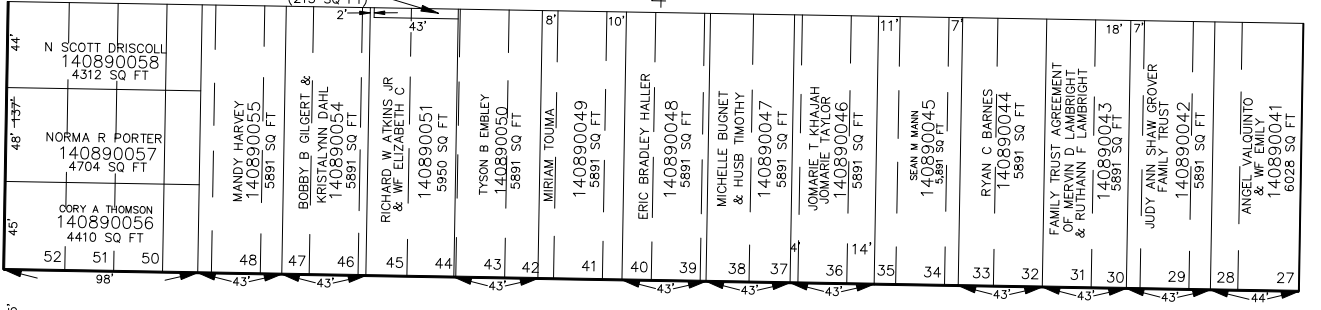
DRIVE



(140890052) COUNTY OF WEBER
(215 SQ FT)

HARRISON

TYLER



S 89'02" E

28TH

STREET